

GAFFER

6-8 17th Floor Hing Wai Center, 7 Tin Wan Praya Road Aberdeen Hong Kong +852 2521 1770 [ww.gaffer.com.hk](http://www.gaffer.com.hk)

November 1- December 20th 2011

Annie Hsiao-Wen Wang, Born 1979 Taipei – like New York Artist Mark Rothko Wang’s aim is to evoke states of mind & simply through the physical presence of the paint. Unlike Rothko, however, Wang deliberately sets out – to offer an opportunity for the viewer to stop and meditate upon the numinous and the emotional.

Prior to even starting Wang prepares the canvas through applying numerous layers of gesso, sanding in between each layer to arrive at a smooth surface. Working slowly to build up the depth of Wang’s surfaces through careful glazing an old technique employed by the Baroque masters - Resulting in an unbroken surface which can be tuned to reflect a glow from any one of the many layers of light & shades.

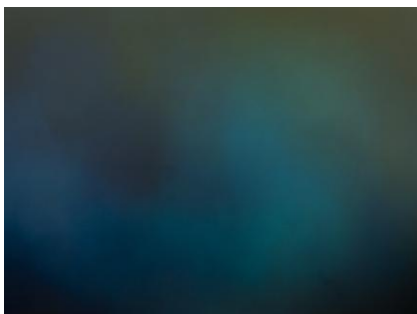
Not uncommon for Wang’s large- scale colorist abstractions of which require enormous discipline as some are worked on for over one year & as Australian art Critic David Bromfield summarize perfectly

“If Rothko polished the world with icy emptiness, Annie Hsiao-Wen Wang tunes it to melodic perfection”

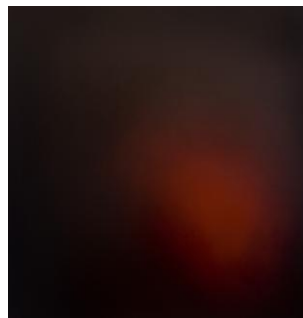
Annie Hsiao-Wen Wang has held solo exhibitions in Australia, Taiwan & Hong Kong & group in Los Angeles Wang’s works are found in private collections in Australia, China, Hong Kong, USA, Indonesia & Taiwan

Please visit Gaffer to view or email gglass@biznetvigator.com or jules@gaffer.com.hk

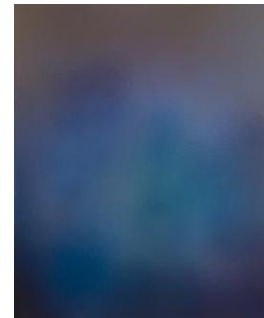
opening hours Monday – Friday via appointment & Saturday 12- 6pm



Nocturne, 2010, 153x214cm



ID, 2010 122x137cm



Exhale, 2010, 122x102cm



Avital Sheffer – Born 1954 Israel, arrived Australia 1990 Sheffer ceramic practice was born after a visit to the dead sea & seeing the Dead Sea scrolls .This moved Sheffer she left her Homoeopath profession & enrolled herself into formal arts training & since has been a full time ceramist. In comes as no accident that Sheffer delicate decoration are drawn from the artist passionate research into Middle – Eastern ceramics, metal, glass perfume bottles, spice jars, textiles & manuscripts. Her hand- painted, hand built earth-ware vessels with her finely penciled designs are a deeper exploration of culture captured in the forms & the surfaces of her sculptures. Sheffer work is enigmatic, yet strangely familiar as it evokes the textures of desert cities & dusty soaks, ornate palaces & ancient scribes.

Avital Sheffer is International acclaimed & has held solo exhibitions in London, USA & Australia.

With major Museum collections include National Gallery Canberra Australia, Powerhouse Museum Sydney Australia, Atelier d'Art Paris France, Jewish Museum Sydney Australia, The Russell Berrie Foundation USA, The Charles Bronfman Collection, Gold Coast Art Gallery etc

Private collections in UK, USA & Australia



Seeds IV, 2010, H72x55xD25cm



Ivanna VII, 2010, H68,30x24cm



Kuntraas III, 2010, H74xW43x25cm



